

Collin College

**DigitalCommons@Collin**

---

Directories

News Archive

---

1992

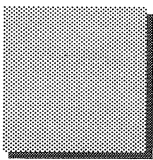
## CCCCD Directory 1992-1994

Collin College

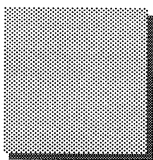
Follow this and additional works at: <https://digitalcommons.collin.edu/directories>

---

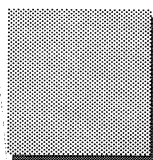
**C**



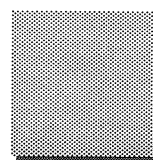
**C**



**C**



**C**



**Faculty / Staff Directory**

**1992-1994**



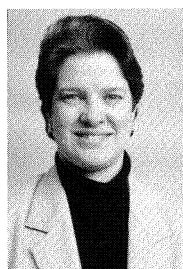
**Abbott-White, Jessie**  
Programmer II  
Computer Services  
CPC/A134, 548-6646



**Adams, Glenn**  
Professor, Computer Aided  
Design/Engineering  
CPC/A222, 548-6834



**Adler, William**  
Professor, Psychology  
SCC/K230, 881-5960



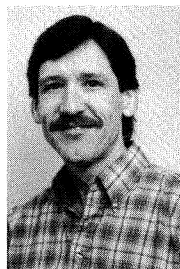
**Afsharirad, Mary**  
Administrative Assistant  
Cooperative Work Experience  
CPC/B252, 548-6730



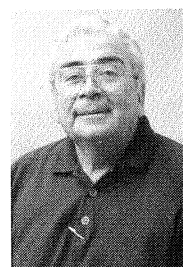
**Agboaye, Ehikioya**  
Professor, Political Science  
SCC/G214, 881-5914



**Ahmad, Jamil**  
Lab Assistant, ALC  
SCC/D154, 881-5868



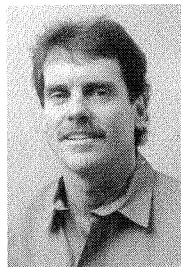
**Akins, Lee**  
Professor, Art  
SCC/B135, 881-5951



**Alarcon, Miguel**  
Assistant, Science Lab  
SCC/H105, 881-5894



**Allen, Toni P.**  
Dean, Enrollment  
Management  
SCC/G111, 881-5792



**Allison, Brian**  
Professor, Music  
SCC/B182, 881-5813



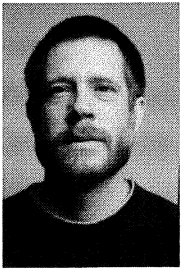
**Allison, Carma**  
Clerk, Developmental Math  
SCC/J228, 881-5921



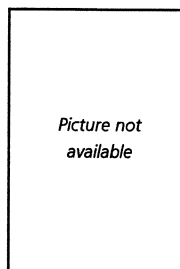
**Andrade, Mary Anne**  
Professor, English  
SCC/B106, 881-5823



**Anthony, John H.**  
President  
CPC/A130, 548-6601



**Anthony, Leland D.**  
Director, Technical  
Services, LRC  
SCC/D218, 881-5866



**Ardis, William**  
Professor, Mathematics  
SCC/J226, 881-5896



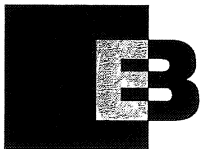
**Armijo, Julio**  
Plant Operations Worker I  
CPC/A116, 548-6690



**Armstrong, Suzanne**  
Accountant, Revenues  
and Receivables  
CPC/B220, 548-6637



**Austin, Juanita**  
Dean, Developmental  
Education  
SCC/K106, 881-5721



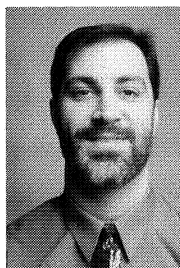
**Bagby, Judy**  
Data Entry Clerk,  
Business Office  
CPC/B213, 548-6639



**Bailey, Dawn**  
Secretary,  
Computer Services  
CPC/A123, 548-6640



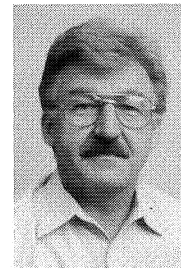
**Bains, Tracy**  
Assistant, ALC Lab  
SCC/D116, 881-5673



**Baker, Brad**  
Director, Theatre  
SCC/C155, 881-5679



**Bakner, Arlene**  
Instructional Associate,  
Developmental Mathematics  
SCC/J241, 881-5959



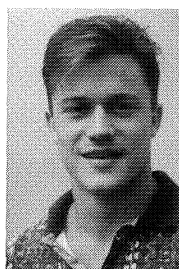
**Baltzer, John**  
Professor, Electronics  
SCC/H128, 881-5794



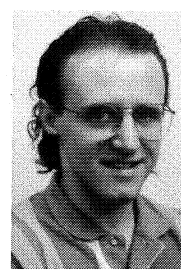
**Banta, Patricia**  
Professor, Real Estate  
SCC/B120, 881-5837



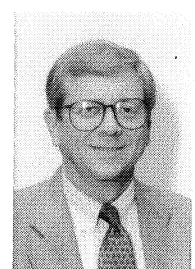
**Barck, Catherine**  
Director, ALC  
SCC/D156, 881-5864



**Beam, Jonathan**  
Technician II,  
Telecommunications  
SCC/H253, 881-5669



**Beck, Jeff**  
Instructional Associate,  
Mathematics & Natural  
Sciences  
SCC/J224, 881-5946



**Beck, Larry A.**  
Professor, Business  
Administration  
SCC/J103, 881-5832





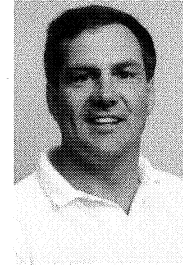
**Beckman, Curtis**  
Counselor/Adviser,  
Project SPARK  
SCC/G201, 881-5676



**Beebe, Patricia**  
Executive Director, JTPA  
BancTexas, McKinney, Suite 360  
542-0490



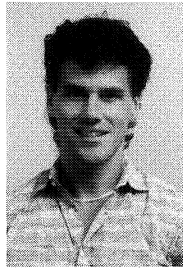
**Bell, C. Michael**  
Professor, Biology  
SCC/H222, 881-5668



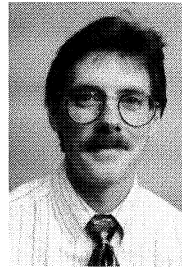
**Berryman, Martin Q.**  
Professor, Physical Education  
Tennis Coach  
SCC/A217, 881-5884



**Boatright, Carole**  
Secretary,  
Business & Engineering  
CPC/B305, 548-6830



**Boliver, Doug**  
Instructional Associate,  
Mathematics & Natural  
Sciences  
SCC/J224, 881-5946



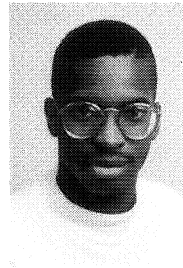
**Boring, Brian**  
Manager, Telecommunications  
CPC/A136, 548-6644



**Bosbyshell, Joan**  
Registration Assistant,  
Registrar's Office  
SCC/G103, 881-5793



**Bowers, Bette**  
Program Assistant,  
Global EDGE  
Nations Bank, Plano  
881-5850



**Boyd, John**  
Plant Operations Worker I  
CPC/A116, 548-6690



**Boyd, Rodney**  
Professor, Humanities  
SCC/D240, 881-5948



**Bradford, Johnnie**  
Lead Teacher,  
Child Development  
SCC/B174, 881-5944



**Breedlove, Peggy**  
Professor, ESL  
SCC/G203, 881-5703



**Brown, Charlette**  
Secretary, Law Enforcement  
CPC/A354, 548-6863



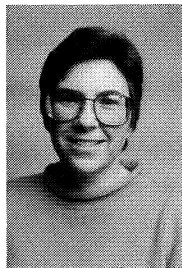
**Brown, Denise M.**  
Professor, Mathematics  
SCC/B134, 881-5886



**Bradley, Julie**  
Director, Accounting and  
Financial Reports  
CPC/B212, 548-6632



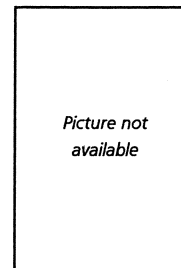
**Brown, Jacquelyn**  
Professor, Nursing  
CPC/A321, 548-6885



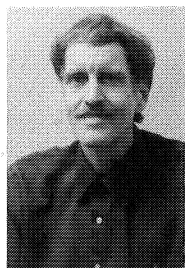
**Brown, Nancy**  
Administrative Assistant,  
Social Sciences  
SCC/B240, 881-5806



**Brown, Peggy**  
Professor, English/Humanities  
SCC/H236, 881-5808



**Broyles, Bobby**  
Maintenance/Painter/  
Carpenter, Plant Operations  
SCC/K103, 881-5690



**Broyles, Michael**  
Professor, Physics  
SCC/J139, 881-5882



**Burch, Peggy**  
Associate Registrar  
SCC/G111, 881-5741



**Burgett, Carolyn**  
Internal Auditor  
CPC/A126, 548-6629



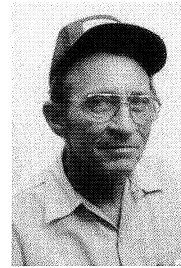
**Burrell, Jo Ann**  
Receptionist/Office Support  
Specialist, Continuing Education  
Nations Bank, Plano  
881-5850



**Burton, Patty**  
Project Assistant,  
PROMISE Program  
CPC/B123, 548-6851



**Burton, Wendy**  
Coordinator, Instructional  
Television  
SCC/D132, 881-5828



**Campbell, Richard**  
Building Maintenance  
Technician  
CPC/A116, 548-6690



**Cantu, Maria**  
Training Employment  
Coordinator, JTPA  
BancTexas, McKinney-Suite 360  
542-0490



**Carroll, Stephen M.**  
Specialist, Computer  
Operations  
CPC/A134, 548-6689



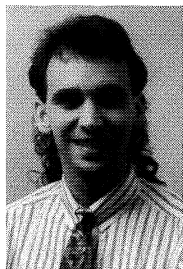
**Cartmill, Donna**  
Bursar  
SCC/G109, 881-5634



**Cereijo, Vicki**  
Professor, Computer Science  
CPC/A217, 548-6826



**Chatskis, Heather**  
Assistant, ALC Lab  
SCC/D152, 881-5966



**Cheatham, Craig J.**  
Programmer/Analyst II,  
Academic Computer Services  
SCC/B220, 881-5769



**Cobb, Sherill**  
Professor, English  
SCC/B193, 881-5812



**Cockerell, Gloria**  
Professor, Marketing  
SCC/J247, 881-5736



**Cohick, Mike**  
Professor, Economics  
SCC/J104, 881-5840



**Collins, Billie K.**  
Director, Articulation and  
Transfer  
SCC/G229, 881-5758



**Collins, Larry**  
Professor, History  
CPC/A353, 548-6820



**Collins, Roberta**  
Switchboard Operator/  
Information Center Clerk  
SCC/G132, 881-5790



**Conry, Linda**  
Professor, Developmental  
Writing  
SCC/D115, 881-5915



**Cook, Joanne**  
Accounts Payable,  
Administrative Services  
CPC/B209, 548-6636



**Corner, Barbara D.**  
Secretary, Plant Operations  
SCC/K006B, 881-5690



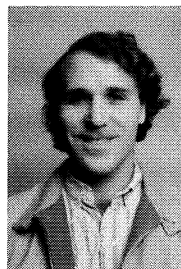
**Cosgrove, Rita**  
Professor, Economics  
CPC/A229, 548-6889



**Cotter, Cathy M.**  
Professor, Art  
SCC/B131, 881-5817



**Coughlin, Vickie L.**  
Adviser, Financial  
Aid/Veteran's Affairs  
CPC/A144, 548-6760



**Coulter, Matthew**  
Professor, History  
SCC/B116, 881-5816



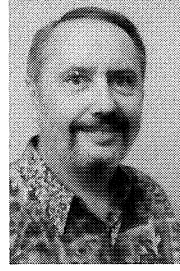
**Cowan, Elizabeth**  
Circulation Assistant, LRC  
SCC/D149, 881-5860



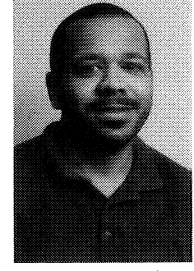
**Crane, Julie**  
Assistant, Human Resources  
SCC/C225, 881-5666



**Crawford, Joan**  
Secretary, Testing Center  
SCC/J232, 881-5922



**Crawford, Michael**  
Professor, Music  
SCC/B183, 881-5807



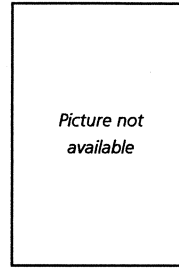
**Crewe, Omri**  
Instructional Associate,  
Developmental Mathematics  
CPC/B336, 548-6896



**Crook, Kandy**  
Secretary, Institutional  
Research  
CPC/A121, 548-6618



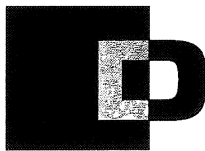
**Crowell, Rebecca C.**  
Associate, Admissions  
SCC/G103, 881-5711



**Cullen, David**  
Professor, History  
SCC/K227, 881-5965



**Cunningham, Billie**  
Professor, Accounting  
SCC/G232, 881-5847



**Davis, Robert**  
Professor, Digital Photography  
SCC/K119, 881-5653



**Day, Dede**  
Executive Secretary,  
College and Community  
Development  
CPC/A114, 548-6608



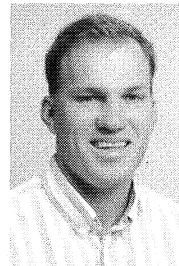
**DeGeeter, Patricia**  
Professor, Office  
Administration  
CPC/J116, 548-5839



**DeLeon, Glenda M.**  
Testing Specialist,  
Testing Center  
SCC/F135, 881-5902



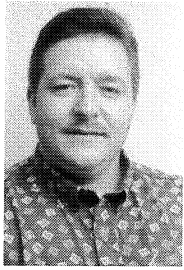
**Demler, Sandra**  
Switchboard Operator/  
Information Center  
SCC/G132, 881-5790



**Dennis, Greg**  
Professor, Physical Education  
Baseball Coach  
SCC/C153, 881-5927



**Devitt, Barbara**  
Professor, Nursing  
CPC/A308, 548-6884



**DeWees, Steve**  
Clinical Coordinator,  
Respiratory Care  
CPC/A324, 548-6719



**Dillingham, William H.**  
Director, Technical Services  
CPC/A306, 548-6641



**Dobbs, Vickie J.**  
Associate, Financial Aid  
SCC/G103, 881-5763



**Doine, Cheri A.**  
Adviser, Student Development  
SCC/G113, 881-5774



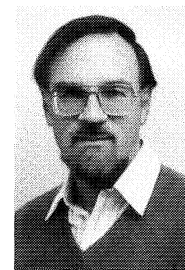
**Ducote, Richard**  
Dean, Library/Learning  
Resources Center  
SCC/D123, 881-5861



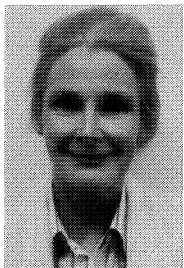
**Duffer, Cynthia**  
Accounting Clerk, Bookstore  
SCC/G124, 881-5682



**Duncan, Jack**  
Training and Employment  
Coordinator, JTPA  
BancTexas, McKinney-Suite 360,  
542-0490



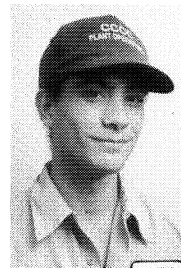
**Dunkle, Sidney**  
Professor, Biology  
SCC/J216, 881-5989



**Dunlop, Ruth**  
Secretary, Instruction  
CPC/A206, 548-6800



**Dupont, Helen E.**  
Coordinator of Employment  
SCC/C223, 881-5662



**Dupont, Jason**  
Groundskeeper I  
CPC/A116, 548-6690



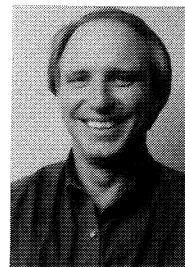
**Durbin, Diane**  
Assistant, Periodicals, LRC  
CPC/B111, 548-6868



**Durham, Karen**  
Training and Employment  
Coordinator, JTPA  
Pittman Office Building, Plano,  
964-3962



**Dysart, Patricia**  
Secretary,  
Business & Engineering  
SCC/F135, 881-5831



**Edwards, Jeff**  
Professor, Economics  
SCC/G217, 881-5833

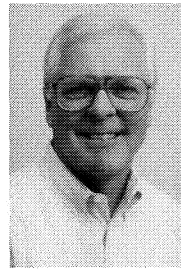




**El-Ashmawy, Amina**  
Professor, Chemistry  
SCC/K226, 881-5961



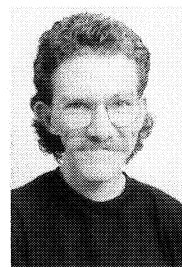
**Ellis, Martha**  
Director, Staff, Program and  
Organizational Development  
Professor, Psychology  
CPC/A125, 548-6606



**Ellis, Steve E.**  
Vice President, Instruction  
SCC/G228, 881-5801



**Emerson, Mary**  
Professor, Computer  
Information System  
SCC/J115, 881-5953



**Erickson, Craig "Yo"**  
Technical Director, Theatre  
SCC/C134, 881-5805



**Eubanks, Barbara**  
Director, Cooperative  
Work Experience  
CPC/B252, 548-6737



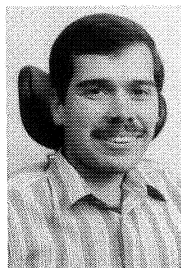
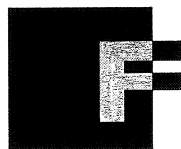
**Evans, D. Marie**  
Supervisor, Accounts Payable,  
Administrative Services  
CPC/B213, 548-6634



**Evans, Susan**  
Professor, Physical Education  
Volleyball Coach  
SCC/A211, 881-5899



**Everett, Sandra**  
Accounting Clerk, JTPA  
BancTexas, McKinney-Suite 360  
542-0490



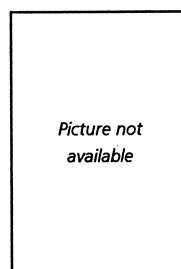
**Farr, Kent**  
Systems Analyst/Programmer  
CPC/A134, 548-6643



**Farrar, Susan B.**  
Director, Academic  
Computing Services  
SCC/B215, 881-5844



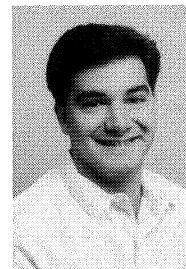
**Farrell, Karen**  
Reference Librarian, LRC  
SCC/D117, 881-5730



**Faulkner, Jimmy**  
Plant Operations Worker  
SCC/K103, 881-5690



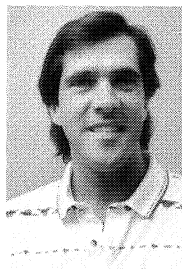
**Fields, Mary C.**  
Professor, Chemistry  
SCC/H112, 881-5883



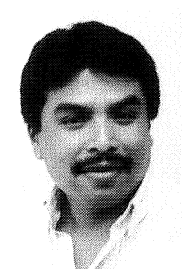
**Fields, Todd**  
Accounting Clerk, Bookstore  
SCC/G124, 881-5685



**Fink, Keli**  
Receptionist/Clerk Typist,  
JTPA  
BancTexas, McKinney-Suite 360,  
542-0490



**Fitz-Gerald, Jimmy**  
Adviser, Student Development  
SCC/G116, 881-5773



**Flores, Modesto**  
Plant Operations Worker  
SCC/K029, 881-5690



**Fowler, Carole**  
Administrative Assistant, Small  
Business Development Center  
Plano Market Square, Plano,  
881-0506



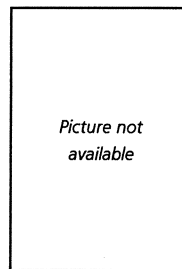
**Francis, Mae**  
Cashier  
CPC/B220, 548-6637



**Franus, Myriam**  
Associate, Financial Aid/  
Veterans Affairs  
SCC/G103, 881-5762



**Freiman, Karen**  
Assistant Director, JTPA  
BancTexas, McKinney-Suite 360  
542-0490

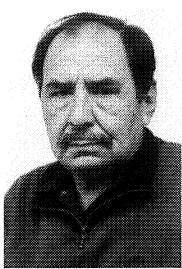


*Picture not  
available*

**Fullerman, Franklin**  
Licensed Professional  
Counselor  
SCC/G108, 881-5779



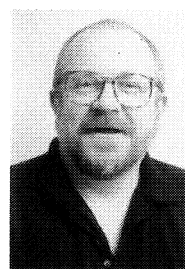
**Furnas, Sue**  
Administrative Assistant,  
Business & Engineering  
SCC/H236, 881-5933



**Garcia, Manuel**  
Groundskeeper II  
CPC/A116, 548-6690



**Garrison, Allan**  
Director, Computer Services  
CPC/A133, 548-6642



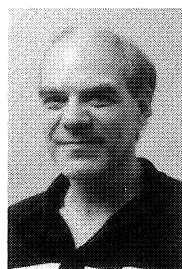
**Garrison, David**  
Professor, Political Science  
SCC/G229, 881-5815



**Gaugler, Sandy**  
Secretary, Cooperative  
Work Experience  
SCC/B235, 881-5735



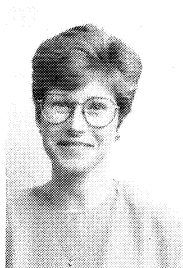
**Gaulke, Marjorie**  
Payroll Assistant,  
Administrative Services  
CPC/B214, 548-6624



**Glosson, David**  
Lab Assistant,  
Arts & Humanities  
SCC/H237, 881-5728



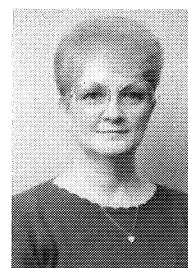
**Gober, Lydia**  
Training and Employment  
Coordinator, JTPA  
BancTexas, McKinney-Suite 360,  
542-0490



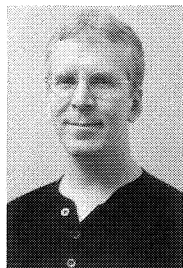
**Godwin, Judy**  
Professor, Developmental  
Mathematics  
SCC/J240, 881-5954



**Gray, Jack B.**  
Vice President, College and  
Community Development  
CPC/A112, 548-6612



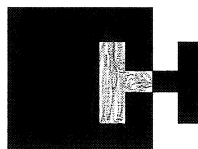
**Greenlees, Patsy**  
Accounting Clerk, Bookstore  
SCC/G124, 881-5667



**Grooms, Chris**  
Professor, English  
SCC/H210, 881-5952



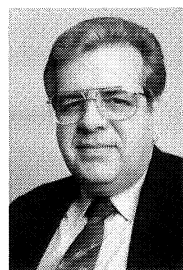
**Guyer, Judy**  
Job Developer,  
Cooperative Work Experience  
SCC/B228, 881-5734



**Haggard, Yvonne**  
Secretary, Employment  
Resource Center  
Pitman Office Building  
423-0968



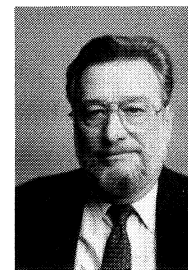
**Haley, Keith**  
Professor, Criminal Justice  
SCC/B119, 881-5984



**Hall, Ralph G.**  
Vice President,  
Administrative Services  
CPC/B210, 548-6631



**Hampton, Dinah G.**  
Secretary, Academic  
Computing Services  
SCC/B218, 881-5766



**Haney, Forrest**  
Program Manager,  
Continuing Education  
Nations Bank Building, Plano  
881-5850



**Hanson, Stephanie**  
Administrative Assistant,  
Developmental Education  
SCC/J135, 881-5957



**Hardy, Steve H.**  
Dean, Continuing Education  
Nations Bank Building, Plano  
881-5850



**Harmon, Shirley**  
Supervisor, Admissions  
SCC/G103, 881-5710



**Haroutunian, Barbara**  
Manager, Benefits and  
Employee Relations  
CPC/B217, 548-6663





**Harris, Vicki B.**  
Registrar  
CPC/A139, 548-6741



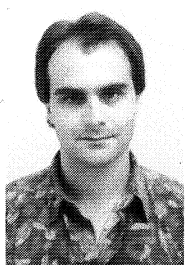
**Hayden, Karen**  
Professor, Developmental  
Writing  
CPC/B318, 548-6898



**Hays, Keith**  
Professor, Music  
SCC/C156, 881-5973



**Helgeson, Jean**  
Professor, Biology  
SCC/J138, 881-5885



**Henard, Kevin**  
Specialist, Media Technology  
SCC/D205, 881-5932



**Henderson, Freddy**  
LAN Manager,  
Academic Computer Services  
SCC/K107, 881-5767



**Henry, Michelle**  
MIS Intake Interviewer, JTPA  
BancTexas, McKinney-Suite 360  
542-0490



**Herrera, Silvia**  
Plant Operations Worker  
SCC/K029, 881-5690



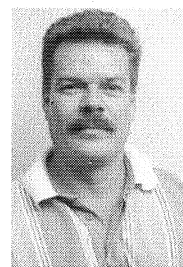
**Hight, Gina**  
Academy Specialist, Law  
Enforcement  
CPC/A351, 548-6862



**Hill, Betty L.**  
Associate, Enrollment  
Management  
CPC/A111, 548-6742



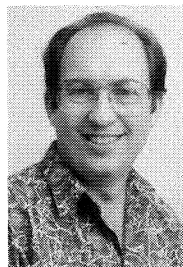
**Hill, Cherie**  
Records Assistant, Human  
Resources  
CPC/B216, 548-6665



**Hodge, Gary**  
Professor, Sociology  
SCC/G216, 881-5820



**Hoglund, Susan**  
Assistant, Student Activities  
SCC/F129, 881-5785



**Holland, Dennis**  
Program Analyst,  
Computer Services  
CPC/A134, 548-6688



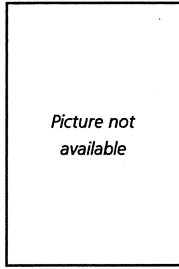
**Holloway, Mary Jane**  
Secretary, Plant Operations  
CPC/A116, 548-6690



**Hosack, Sharon**  
Professor, Mathematics  
SCC/H116, 881-5887



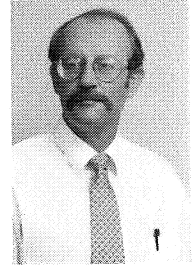
**Howard, Tony J.**  
Professor, English  
CPC/B330, 548-6804



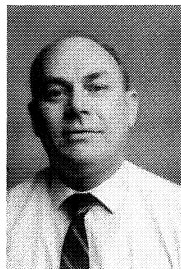
**Howell, Ernest**  
Graphic Hardware Support  
Specialist, Advertising Art  
SCC/K119, 881-5958



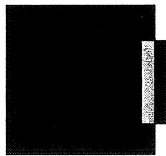
**Howry, Cindy K.**  
Professor, Computer Science  
and Software Development  
SCC/J125, 881-5838



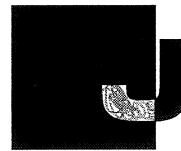
**Huey, Peter**  
Professor, Accounting  
CPC/A250, 548-6890



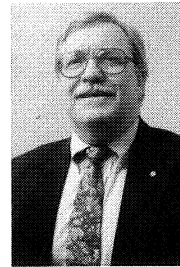
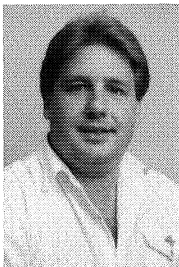
**Hunt, Lee**  
Professor, Computer  
Information Systems  
SCC/J118, 881-5878



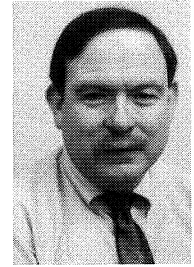
**Ingram, Stephanie M.**  
Career Advising Associate,  
Future Shop  
SCC/G105, 881-5775



**Jack, Billy**  
Supervisor, Building Service  
CPC/A116, 548-6690



**Jackson, Ron**  
Assistant Director,  
Plant Operations  
SCC/K028, 881-5698



**James, Bill**  
Computer Operator,  
Computer Services  
CPC/A113, 548-6645



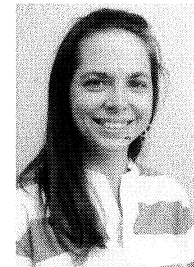
**James, Washington**  
Professor, Computer  
Information Systems  
SCC/J127, 881-5836



**Jaynes, Joe**  
Professor, History  
SCC/H221, 881-5822



**Jeffrey, Sherry**  
Records Assistant,  
Registrar's Office  
SCC/G103, 881-5744



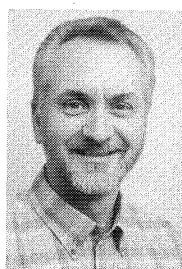
**Jenkins, Carol L.**  
Associate, Student Activities  
CPC/B250, 548-6787



**Jenkins, Joan**  
Professor, History  
SCC/J244, 881-5829



**Jennings, Cynthia**  
Clerk/Cashier  
SCC/G115, 881-5634



**Johnson, Charles**  
Professor, Mathematics  
SCC/K220, 881-5722



**Johnson, Norma**  
Adviser,  
Student Development  
CPC/A111, 548-6778



**Johnson, Yvonne**  
Professor, History  
SCC/G223, 881-5834



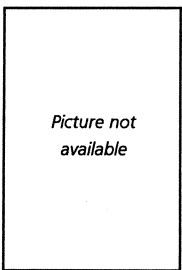
**Joiner, Frankie**  
Administrative Assistant,  
Continuing Education  
Nations Bank, Plano  
881-5850



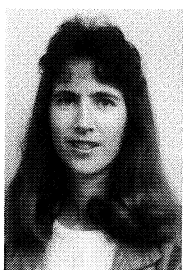
**Jones, Chris A.**  
Director, Small Business  
Development Center  
Plano Market Square, Plano  
881-0506



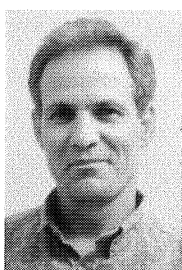
**Jones, Dorothy**  
Records Assistant,  
Registrar's Office  
CPC/A111, 548-6744



**Jones, Eva**  
Assistant Manager, Bookstore  
CPC/A106, 548-6682



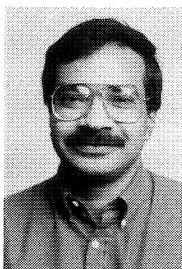
**Jones, Karen**  
Secretary, Purchasing  
CPC/B209, 548-6672



**Jones, U. Lynn**  
Professor, Political Science  
SCC/J107, 881-5841



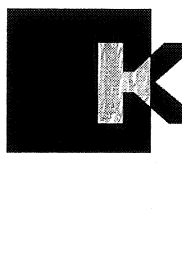
**Jordan, Mary**  
Grants and Contract  
Accountant, Administrative  
Services  
CPC/B209, 548-6635



**Joshua, John**  
Professor,  
Developmental Mathematics  
CPC/B113, 548-6854



**Justice, Pamela**  
Professor, Physics  
SCC/J217, 881-5909



**Kaczka, Shirley**  
Manager, Compensation  
& Employment  
SCC/C224, 881-5665



**Kappus, Sheryl S.**  
Dean, Mathematics and  
Natural Sciences  
SCC/K105, 881-5881



**Karr, Rosemary**  
Professor, Developmental  
Mathematics  
CPC/B333, 548-6638



**Kasbarian, Hillary**  
Director, Science Laboratories  
SCC/H115, 881-5988



**Kelley, Sylvia**  
Manager, Marketing and  
Evaluation, Global EDGE  
Nations Bank, Plano  
881-5850



**Kelly, William**  
Administrative Assistant,  
Arts & Humanities  
SCC/B105, 881-5857



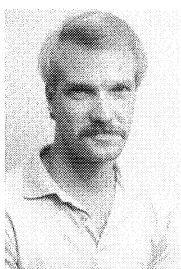
**Kennedy, Joan**  
Professor, English  
SCC/H212, 881-5980



**Kerby, Kathy**  
Secretary, Social Sciences  
SCC/B240, 881-5800



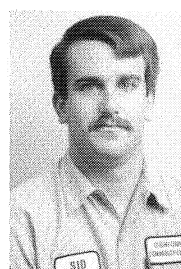
**Kess, Roberta**  
Director, Texas  
Resource Center  
CPC/B252, 548-6733



**Ketchum, Paul**  
Technician I,  
Telecommunication  
CPC/A356, 548-6652



**Kibby, Esther**  
Professor, Advertising Art  
SCC/K118, 881-5968



**Kile, Sidney**  
Operations/Maintenance  
Technician  
SCC/K026, 881-5694



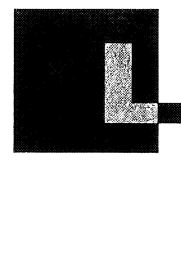
**Killen, Robert**  
Programmer Analyst I,  
Computer Services  
CPC/A125, 548-6648



**Klancnik, Jill**  
Writer, Public Information  
SCC/F104, 881-5615



**Kunz, Russell**  
Professor, Management  
Development  
SCC/B118, 881-5819



**LaFollett, Jean**  
Executive Secretary,  
Human Resources  
CPC/B216, 548-6660



**LaFon, Joy**  
Buying Specialist,  
Purchasing  
CPC/B209, 548-6670



**LaGrone, Judy J.**  
Executive Assistant  
to the President  
CPC/A124, 548-6600



**Lalanne, Charles**  
Specialist, Media Technology  
SCC/D205, 881-5934



**Lane, Shelley D.**  
Professor, Speech  
Communications  
SCC/B108, 881-5821



**Lasek, Margie**  
Director, Student Activities  
SCC/F126, 881-5787



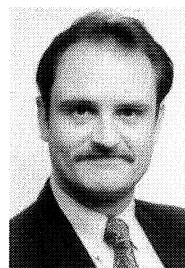
**LeForge, Charlotte A.**  
Assistant, Career Planning  
and Placement  
SCC/G103, 881-5784



**Leitner, Peter**  
Director, Audio/Visual  
Services and Circulation  
SCC/D208, 881-5862



**Leone, Nora**  
Program Assistant, Texas  
Resource Center  
CPC/B252, 548-6734



**Lewis, Ted**  
Professor, Political Science  
CPC/B310 548-6813



**Lilly, Vivian**  
Associate Dean,  
Nursing  
CPC/A315, 548-6883



**Lingo, Kathy**  
Professor, Speech  
Communications  
SCC/J106, 881-5906



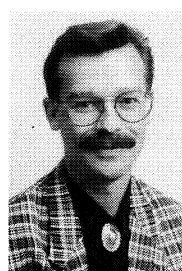
**Lipscomb, Dan**  
Professor, Psychology  
SCC/G225, 881-5715



**Littrell, Doris**  
Specialist, Student  
Development  
CPC/A108, 548-6770



**Lockhart, Elaine**  
MIS Intake Interviewer, JTPA  
BancTexas, McKinney-Suite 360  
542-0490

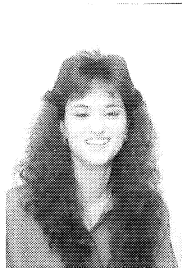


**Long, Ralph**  
Professor, Speech  
Communications  
SCC/H215, 881-5982



**Lusk, Barbara**  
Professor, Psychology  
CPC/B328, 548-6809





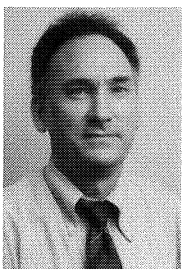
**Lyall, Donna G.**  
Publications Assistant,  
Public Information  
SCC/F105, 881-5614



**Ma, Teresa**  
Assistant, Technical  
Services, LRC  
SCC/D216, 881-5931



**Marton, Sandra**  
Assistant Technical  
Services, LRC  
SCC/D216, 881-5931



**Marvin, Tom**  
Operations/Maintenance  
Technician  
SCC/K026, 881-5694



**Mast, Debra S.**  
Clerk, Fitness Center  
SCC/A114, 881-5848



**Matijevich, Elke**  
Professor, German  
SCC/K229, 881-5970



**Matlock, Judy**  
Professor, Developmental  
Mathematics  
SCC/J237, 881-5924



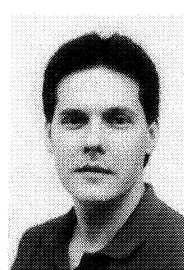
**McAuliff, Patrick**  
Director, Fire Science  
CPC/A219, 548-6837



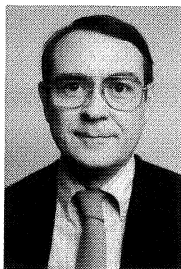
**McBride, Shirley A.**  
Professor, Developmental  
Writing  
SCC/J218, 881-5675



**McCoy, Sandy**  
Instructional Associate,  
Developmental Mathematics  
SCC/J241, 881-5959



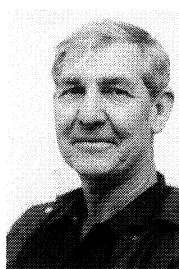
**McCulloch, David**  
Professor, Biology  
SCC/J225, 881-5991



**McFerrin, Ted**  
Professor, English  
SCC/B109, 881-5916



**McGar, Michael**  
Professor, Advertising Art  
SCC/K119, 881-5647



**McKinzey, Tommy**  
Operations/Maintenance  
Technician  
SCC/K026, 881-5694



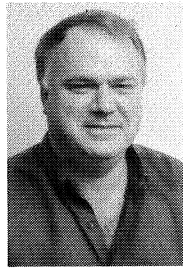
**McLean, Virginia**  
Coordinator, Publications,  
Public Information  
SCC/F136, 881-5613



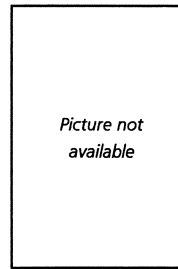
**McNease, Brenda K.**  
Administrative Assistant,  
Human Resources  
CPC/B216, 548-6660



**McRae, Mary S.**  
Dean of Students  
SCC/G233, 881-5771



**McRae, Tony**  
Professor, Computer Science  
SCC/J124, 881-5918



**McTee, Patricia G.**  
Accounting Clerk, Bookstore  
CPC/A105, 548-6683



**Meinhardt, Stephanie**  
Director, Testing  
SCC/F131, 881-5739



**Meyers, Raquel**  
Secretary, HPED  
SCC/A218, 881-5925



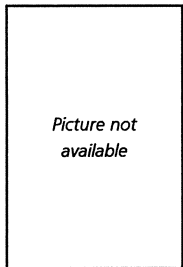
**Mickle, Carol Ann**  
Lead Teacher,  
Child Development  
SCC/B174, 881-5944



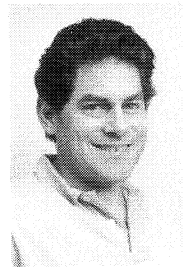
**Miles-Rosenfield, Marti**  
Professor, Developmental  
Writing  
CPC/B307, 548-6675



**Milford, Mary**  
Professor, Real Estate  
SCC/B121, 881-5639



**Miller, Joyce M.**  
Professor, English  
SCC/J243, 881-5981



**Miller, Lawrence, W.**  
Professor, Political Science  
SCC/H216, 881-5895



**Miller, Marilyn**  
Circulation Assistant, LRC  
SCC/D149, 881-5860



**Miller, Steve**  
Offset Press Operator III  
SCC/K129, 881-5708



**Mitchell, Carelyn L.**  
Division Secretary,  
Registrar's Office  
CPC/A111, 548-6740



**Mizell, Kay**  
Professor, English  
SCC/H252, 881-5803



**Molder, Sammie**  
Accounting Clerk,  
Bookstore  
SCC/G125, 881-5680



**Money, Barbara A.**  
Director, Career Planning  
and Placement  
SCC/G229, 881-5772



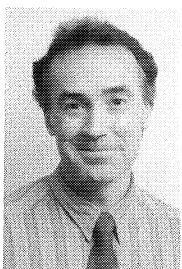
**Moore, Lin**  
Professor, Child Development  
SCC/B175, 881-5824



**Morse, Sue**  
Specialist, Human Resources  
CPC/B216, 548-6662



**Moss, Marilyn**  
Professor, Developmental  
Mathematics  
CPC/B334, 548-6674



**Mullin, John**  
Reference Librarian, LRC  
SCC/D108, 881-5867



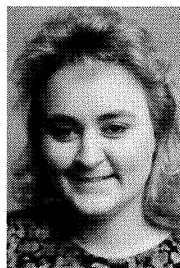
**Murphy, Darla**  
Secretary, Public Information  
SCC/F102, 881-5818



**Myers, Sheryl**  
Secretary, Continuing Education  
Nations Bank, Plano  
881-5850



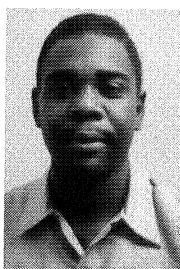
**Nanson, Joyce**  
Assistant Director/Lab  
Coordinator,  
CHDV Lab School  
SCC/B176, 881-5945



**Nation, Sherri**  
Secretary,  
Mathematics & Natural  
Sciences  
SCC/K102, 881-5880



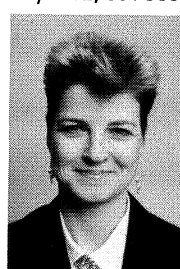
**Nazario-Rodgers, Vivian**  
Associate, Computer Lab  
SCC/J120, 881-5877



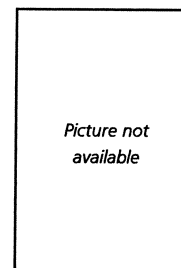
**Neal, Kenny**  
Operations/Maintenance  
Technician  
SCC/K026, 881-5694



**Neal, Victoria**  
Coordinator, Special  
Populations and Recruitment  
CPC/B325, 548-6838



**Newman, Belinda**  
Assistant to the Vice President,  
Instruction  
CPC/A207, 548-6803



**Newsome, Audrey**  
Adviser/Probation/Retention,  
Student Development  
SCC/G105, 881-5677





**Nicar, Leslie J.**  
Professor, Accounting  
SCC/J219, 881-5842



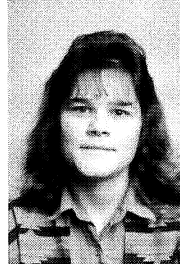
**Nilsen, Walter**  
Director, Facilities Planning  
CPC/A152, 548-6693



**Norton, Dea**  
Data Entry Clerk, College and  
Community Development  
CPC/A114, 548-6611



**Oakry, Barbara**  
Mail Clerk/Courier  
CPC/A116, 548-6694



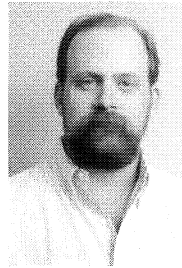
**O'Bier, Tammy**  
Assistant, Reprographics  
SCC/K129, 881-5650



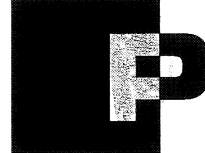
**Okaro, Donna**  
Secretary, Student  
Development  
SCC/G103, 881-5780



**O'Connell, Kevin**  
Associate, Computer Lab  
CPC/A213, 548-6877



**O'Neal, Gordon**  
Professor, English  
CPC/B329, 548-6841



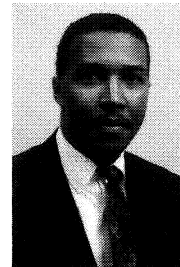
**Palmer, Lillie M.**  
Dean, Business and  
Engineering  
SCC/F135, 881-5892



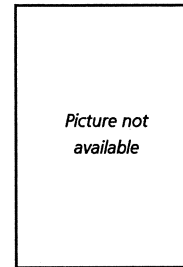
**Parcells, Rex A.**  
Dean, Health Science, Physical  
Education and Child  
Development  
SCC/A220, 881-5888



**Parker, Rita**  
Chief Operator/Maintenance  
Technician, Plant Operations  
SCC/K020, 881-5674



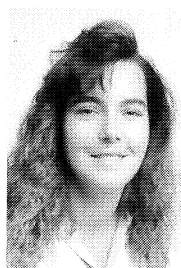
**Parrish, Percy**  
Director, Financial Aid  
SCC/G103, 881-5761



**Parsley, Rhonda**  
Training and Employment  
Coordinator, JTPA  
BancTexas, McKinney-Suite360,  
542-0490



**Paulson, Susan**  
Programmer,  
Computer Services  
CPC/A123, 548-6647



**Payne, Karla**  
Professor, Physical Education  
CPC/B313, 548-6892



**Pell, Juanita**  
Plant Operations Worker I  
CPC/A116, 548-6690



**Perkins, Toni**  
Accounting Clerk, Bookstore  
SCC/G125, 881-5680



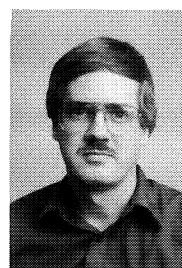
**Perkus, Gerald H.**  
Director, Institutional Research  
CPC/A122, 548-6617



**Phillips, Hazel**  
Professor, Developmental  
Writing  
CPC/B114, 548-6899



**Phillips, Maxine**  
Clerk, Purchasing  
CPC/B209, 548-6676



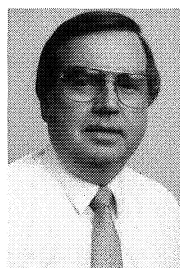
**Pippin, Alan**  
Reference Librarian, LRC  
SCC/D120, 881-5910



**Porter, Beth M.**  
Director, Math Lab  
SCC/J229, 881-5947



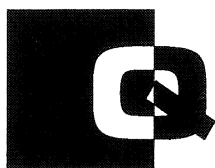
**Powell, Annette**  
Circulation Assistant, LRC  
CPC/B105, 548-6860



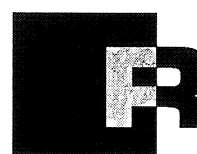
**Powell, Eugene**  
Director, Plant Operations  
SCC/K027, 881-5691



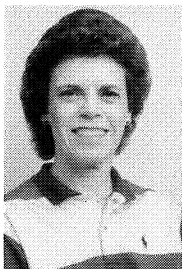
**Proffer, P. Douglas**  
Professor, Mathematics  
SCC/J238, 881-5889



**Quigley, Brendan**  
Assistant Technical  
Director, Theatre  
SCC/C134, 881-5602



**Ramsey, Marjorie**  
Learning Disabilities Specialist  
SCC/G205, 881-5929



**Ramsower, Diana**  
Professor, Office  
Administration  
SCC/J117, 881-5835



**Reagan, Cathy Jean**  
Secretary, Financial Aid  
SCC/G103, 881-5786



**Rector, Lee**  
Professor, Respiratory Care  
CPC/A323, 548-6870



**Reece, J. Rex**  
Director, Art Lab  
SCC/C152, 881-5804



**Reeves, Nancy**  
Instructional Associate, ALC  
CPC/B118, 548-6869



**Reneau, Laura**  
Room Coordinator  
SCC/G227, 881-5799



**Reynolds, Paula**  
Administrative Assistant,  
Enrollment Management  
SCC/G103, 881-5793



**Rich, Nelson**  
Professor, Biology  
SCC/J223, 881-5874



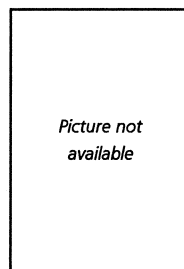
**Richardson, Judy P.**  
Degree Plan Specialist  
CPC/A111, 548-6712



**Richardson, Wanda**  
Clerk, Testing Center  
CPC/B342, 548-6888



**Ridley, Barbara**  
Training and Employment  
Coordinator, JTPA  
BancTexas, McKinney-Suite 360,  
542-0490



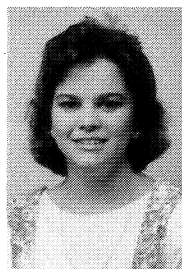
**Ridley, Ray**  
Monitor, JTPA  
BancTexas, McKinney-Suite 360,  
542-0490



**Rodgers, J. Tom**  
Assistant to the President  
CPC/A125, 548-6882



**Roessler, P. Dee**  
Professor, Legal Assistant  
CPC/A352, 548-6823



**Rollins, Tamara**  
Secretary, Articulation  
and Transfer  
SCC/G231, 881-5757



**Roman, Paula**  
Director, Resource  
Development  
CPC/A114, 548-6609



**Rose, Karen**  
Program Manager,  
Continuing Education  
Nations Bank, 881-5850



**Rubino, Edelin**  
Professor, Developmental  
Reading  
SCC/D114, 881-5956



**Rudy, Olga**  
Reference Librarian,  
Frisco Library  
335-4243



**Russell, Kimberly K.**  
Director, Human Resources  
CPC/B219, 548-6661



**Rutz, Shirley**  
Secretary, Technical Services  
CPC/A305, 548-6622



**Salisbury, Marjorie A.**  
Division Secretary,  
Arts & Humanities  
SCC/B189, 881-5810



**Sanchez, Judy**  
Professor, Computer Science  
SCC/J126, 881-5795



**Sanchez, Monica**  
Secretary, Associate  
Faculty  
SCC/K127, 881-5759



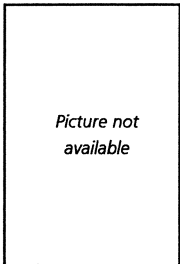
**Schmidt, Margo**  
Inventory Control,  
Administrative Services  
CPC/B220, 548-6627



**Schmittou, Marilyn L.**  
Administrative Assistant,  
Dean of Students  
SCC/G227, 881-5770



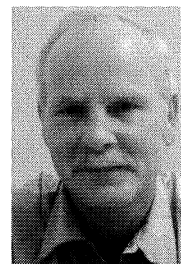
**Schrivier, Janet Ross**  
Professor, Humanities  
SCC/H113, 881-5825



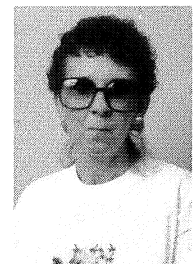
**Schwartz, Harriet**  
Dean, Social Sciences  
SCC/B240, 881-5800



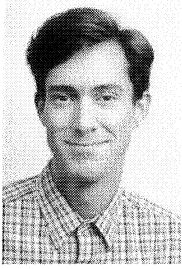
**Scott, Fritzeen**  
Manager, Purchasing  
CPC/B222, 548-6671



**Scott, John David**  
Operations/Maintenance  
Technician  
SCC/K026, 881-5694



**Seabolt, Janet S.**  
Plant Operations Worker II  
CPC/A116, 548-6690



**Searl, Steven**  
Periodicals Assistant, LRC  
SCC/D105, 881-5856



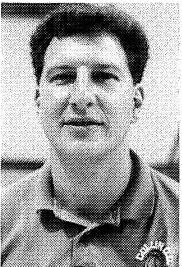
**Shaum, Ricky**  
Specialist, Future Shop  
SCC/G103, 881-5781



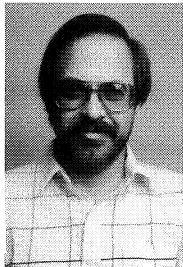
**Shoup Linda**  
Program Developer,  
Global EDGE  
Nations Bank, Plano  
881-5850



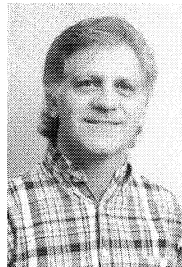
**Siebman, C. Sue**  
Director, Bookstore  
SCC/G127, 881-5684



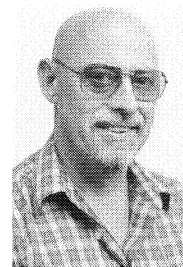
**Sigona, James A.**  
Professor, Physical Education  
Basketball Coach  
SCC/A104, 881-5845



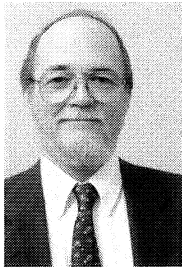
**Slater, Bill**  
Professor, Computer Science  
SCC/H207, 881-5976



**Smith, Jack**  
Assistant, Health Lab  
CPC/A325, 548-6822



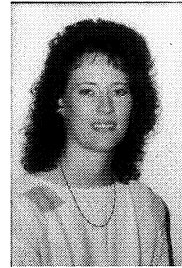
**Smith, Mike**  
Clerk, Testing Center  
SCC/J232, 881-5922



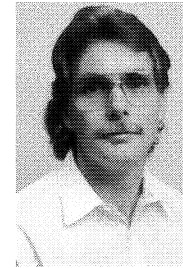
**Smith, Mitchell E.**  
Dean, Art & Humanities  
SCC/B189, 881-5811



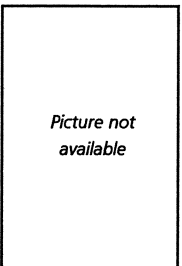
**Sobotka, M. Jean**  
Assistant, Technical  
Services, LRC  
SCC/D217, 881-5869



**Sourjah, Susan**  
Clerk, Receiving  
SCC/K016, 881-5692



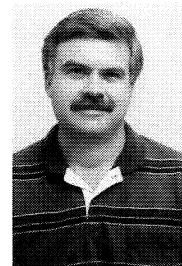
**Spears, Ronald**  
Director, Law  
Enforcement Academy  
CPC/A355, 548-6861



**St. John, Susan**  
Switchboard Operator/  
Information Center  
CPC/A108, 548-6790



**Stark, Cathryn**  
Professor, Mathematics  
SCC/K228, 881-5937



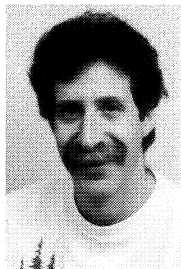
**Starnes, Kevin**  
Professor, Ornamental  
Horticulture & Landscape  
Technology  
SCC/J220, 881-5908



**Stephen, Carol**  
Secretary Project SPARK  
SCC/G200, 881-5898



**Stearns, Thomas**  
Coordinator, Student  
Recruitment  
SCC/G116, 881-5712



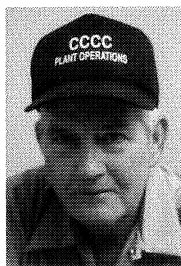
**Stern, Lawrence**  
Professor, Sociology  
SCC/J246, 881-5608



**Stewart, Elaine**  
Coordinator, Job Location  
CPC/A142, 548-6769



**Stoutley, Donna**  
Manager, Payroll  
CPC/B214, 548-6633



**Stubbs, Bill**  
Plant Operations Worker  
SCC/K029, 881-5690



**Swift, Shari L.**  
Development Associate,  
Community and College  
Development  
CPC/A114, 548-6611



**Tarafdar, Meg**  
Professor, English  
SCC/K217, 881-5912



**Tate, Kerry**  
Adviser, Students  
with Disabilities  
SCC/G107, 881-5950



**Taylor, Fern**  
Secretary, JTPA  
Pittman Office Building, Plano  
964-3962



**Tebbetts, Nelia**  
Lab Assistant, Advertising Art  
SCC/K122, 881-5907



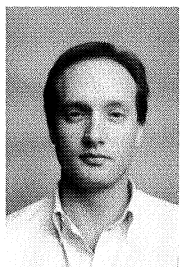
**Terrell, Sandra**  
Professor, Nursing  
CPC/B312, 548-6835



**Thomas, Rhonda**  
Data Management Assistant,  
Registrar's Office  
CPC/A111, 548-6743



**Thompson, Linda**  
Professor, Office  
Administration  
CPC/A221, 548-6815



**Thun, Steve**  
Hardware/Software  
Support Technician,  
Academic Computer Services  
SCC/K107, 881-5768



**Tibbals, Alicia T.**  
Reference Librarian, LRC  
CPC/B112, 548-6866





**Tolleson, Martha F.**  
Professor, English  
CPC/B324, 548-6843



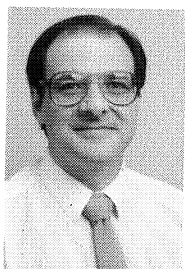
**Tremain, Beverly**  
Professor, Physical Education  
Wellness Coordinator  
SCC/A219, 881-5777



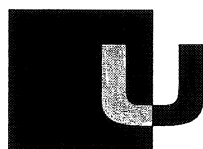
**Troppy, Cheri M.**  
Assistant/Applications,  
Admissions  
CPC/A111, 881-5714



**Truitt-Leonard, Rhonda**  
Lab Assistant, ALC  
SCC/D116, 881-5673



**Tullock, Sam**  
Professor, History  
SCC/G222, 881-5737



**Ulrich, Sharon**  
Training and Employment  
Coordinator, JTPA  
Pittman Office Building  
964-3962



**Unger, Jerri**  
Secretary, JTPA  
BancTexas, McKinney-Suite 360  
542-0490



**Upton, Carol**  
Program Manager Assistant,  
Continuing Education  
Nations Bank, 881-5850



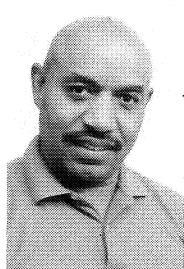
**Valdez, Sylvia**  
Secretary, Developmental  
Education  
SCC/K102, 881-5720



**Van Cleef, June**  
Professor, Photography  
SCC/H206, 881-5827



**Vargas, Margo**  
Director, Employment Resource  
Center  
Pittman Office Building,  
423-0968



**Voy, Michael A.**  
Professor, Business  
Administration  
CPC/A307, 548-6840



**Wallace, Dean**  
Professor, Accounting  
SCC/C152, 881-5706



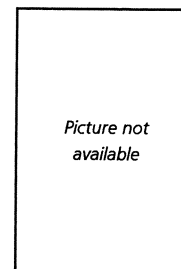
**Walker, Rhona**  
Secretary, Advising  
SCC/G103, 881-5778



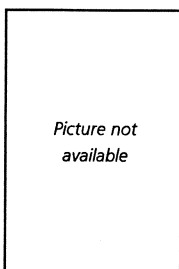
**Walo, Patricia**  
Professor, Nursing  
CPC/A320, 548-6875



**Watson, Randy**  
Specialist, Media  
Technology  
CPC/B107, 548-6871



**West, Odie**  
Groundskeeper  
SCC/K029, 881-5697



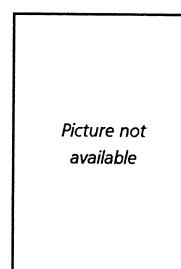
**White, Deborah**  
Professor, Sociology/  
Psychology  
CPC/B311, 548-6812



**White, Judith**  
Specialist, Telecommunications  
CPC/A357, 548-6654



**Whitson, Jill**  
Professor, Physical Education  
Dance Coordinator  
SCC/B117, 881-5913



**Williams, Byrd IV**  
Professor, Photography  
SCC/H207, 881-5727



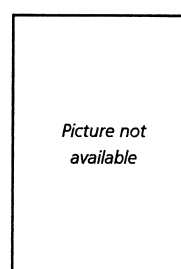
**Williams, Lane**  
Specialist, Technical  
Support, LRC  
SCC/D119, 881-5917



**Williamson, Jenny**  
Instructional Associate,  
Non-Course-Based Remediation  
SCC/D113, 881-5723



**Willison, Marie**  
Cashier, Administrative Services  
CPC/B220, 548-6653



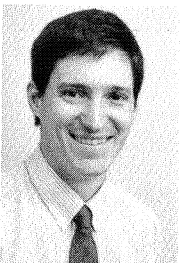
**Wilson, Deanna F.**  
Executive Secretary,  
Instruction  
SCC/G226, 881-5802



**Wilson, Debra**  
Accountant, Grants  
and Contracts  
CPC/B220, 548-6628



**Winburn, Larry**  
Supervisor, Reprographics  
Services  
SCC/K129, 881-5650



**Wintermute, Douglas**  
Director, Public Information  
SCC/F103, 881-5610



**Wolfe, Betty R.**  
Administrative Assistant,  
Mathematics and Natural  
Sciences  
SCC/J136, 881-5859





**Wood, Sherry**  
Training and Employment  
Coordinator, JTPA  
Pittman Office Building, Plano  
964-3962



**Woolverton, Vicki**  
Specialist, Registrar's Office  
SCC/G111, 881-5743



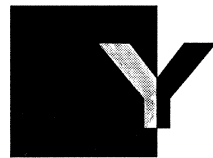
**Wormald, Anita**  
Program Manager,  
Continuing Education  
Nations Bank Building, Plano  
881-5850



**Worsnop, Carol A.**  
Secretary, Learning  
Resources Center  
SCC/D124, 881-5863



**Wright, Mary G.**  
Division Secretary, President's  
Office  
CPC/A124, 548-6605



**York, Ricky**  
Plant Operations Worker I  
CPC/A116, 548-6690



**York, Vicki**  
Assistant/Benefits,  
Human Resources  
CPC/B216, 548-6664



**Young, Estelita**  
Professor, Spanish  
SCC/G215, 881-5724



**Young, Marcia**  
Accountant,  
Administrative Services  
CPC/B220, 548-6625

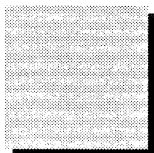


**Zerwas, Steve**  
Assistant to the Director,  
Institutional Research  
CPC/A121, 548-6779

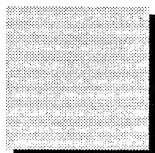


**Collin County Community College**

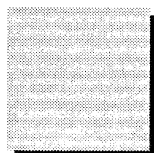
**C**



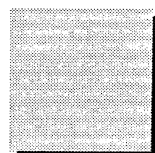
**C**



**C**



**C**



**Faculty/Staff Directory  
Additions  
1994**



**Jane E. Allen**  
Professor, Nursing  
CPC/H320, 548-5893



**Robert M. Benavides**  
Professor, Psychology  
CPC/B237, 548-6707



**Kris Berg**  
Professor, Music and Jazz  
Studies  
SCC/C156, 881-5108



**Michelle Boring**  
Secretary, Purchasing  
CPC/B216, 548-6676



**Pete Brierley**  
Professor, CIS  
CPC/E221, 548-6893



**Erik Bushland**  
Clerk, Testing Center  
SCC/J232, 881-5922



**Sonia Castillo**  
Secretary, Instruction  
CPC/B305, 548-6830



**Anita Cothran**  
Assistant Director, Accounting  
and Financial Reporting  
CPC/B213, 548-6621



**Laura Foster-Eason**  
Professor, Developmental  
Writing  
CPC/E214, 548-6895



**Pamela Gaiter**  
Professor, Sociology  
CPC/E214, 548-6895



**Minnie Garcia**  
Secretary, Student Records  
CWE  
SCC/B235, 881-5726



**Nick Geller**  
Professor, Mathematics  
CPC/B330, 548-6718



**Mary Jane Gibbons**  
Division Secretary  
Math and Natural Sciences  
SCC/K102, 881-5880



**Joe E. Hackney**  
Instructional Associate,  
Electronics  
SCC/H128, 881-5794



**Carol Harris**  
Secretary, Admissions  
SCC/G103, 881-5853



**Peggy Head**  
Clerk, Testing Center  
SCC/J232, 881-5922



**Amy Holmes**  
Registration Specialist  
Registrar's Office  
SCC/G103, 881-5743



**Nancy Huff**  
Data Entry Clerk  
Administrative Services  
CPC/B209, 548-6639



**Bob Leicht**  
Job Developer  
CWE  
SCC/B228, 881-5734



**Nina Liu**  
Programmer/Analyst, ACS  
SCC/B220, 881-5769



**Kathrine Luft**  
Assistant Registrar  
Continuing Education  
CYC/B101, 985-3772



**Marilyn Mask**  
Youth Counselor, JTPA  
BankTexas, 569-4650



**Doris McCullough**  
Secretary,  
Business and Engineering  
SCC/F135, 881-5846



**Jeff MacKinnon**  
Professor, Anthropology  
SCC/H219, 881-5112



**Diana Miley**  
Case Manager, JTPA  
BankTexas, 569-4650



**Barbara Miller**  
Division Secretary  
Institutional Research  
CPC/A116, 548-6618



**Kemal Moula**  
Professor, French  
SCC/G204, 881-5678



**Michael H. Neiman**  
Case Manager, JTPA  
BankTexas, McKinney  
569-4650



**Lela Nickel**  
Executive Secretary, JTPA  
BankTexas, McKinney  
542-0490



**Kim Nithiananda**  
Director,  
Child Development Center  
SCC/B174, 881-5967



**Daniel Oney**  
Research Associate  
Institutional Research  
CPC/A116, 548-6614



**Monica Perkins**  
Human Resources Assistant  
CPC/B304, 548-6600



**Earl Perry**  
Representative, JTPA  
BankTexas, 569-4650



**Linda Qualia**  
Licensed Professional  
Counselor  
SCC/G108, 881-5779



**Kelley Reynolds**  
Professor, Respiratory Care  
CPC/A324, 548-6819



**Matt Rohrer**  
Coordinator, Fitness/Facilities  
Women's Basketball Coach  
SCC/A220, 881-5888



**Donna Sauls**  
Professor, Nursing  
CPC/B313, 548-5892



**Harriet Schwartz**  
Dean, Social Sciences  
CPC/B330, 548-6718



**Kim Sinclair**  
Grants and Contracts  
Accountant  
CPC/B214, 548-6628



**Michelle Songy**  
Division Secretary,  
Social Sciences  
SCC/B240, 881-5800



**Susan St. John**  
Division Secretary,  
Fine Arts  
SCC/K216, 881-5107



**Ike Tennison**  
Executive Director, JTPA  
BankTexas, Suite 360  
McKinney, 569-4650



**Mimi Traynor**  
Division Secretary,  
Humanities and International  
Studies  
SCC/B189, 881-5810



**Buddy West**  
Foreman, Grounds  
Maintenance  
SCC/K029, 881-5697



**Cheryl White**  
Cashier,  
Administrative Services  
CPC/B220, 548-6616



**Mary Young**  
Admissions Assistant  
SCC/G103, 881-5710